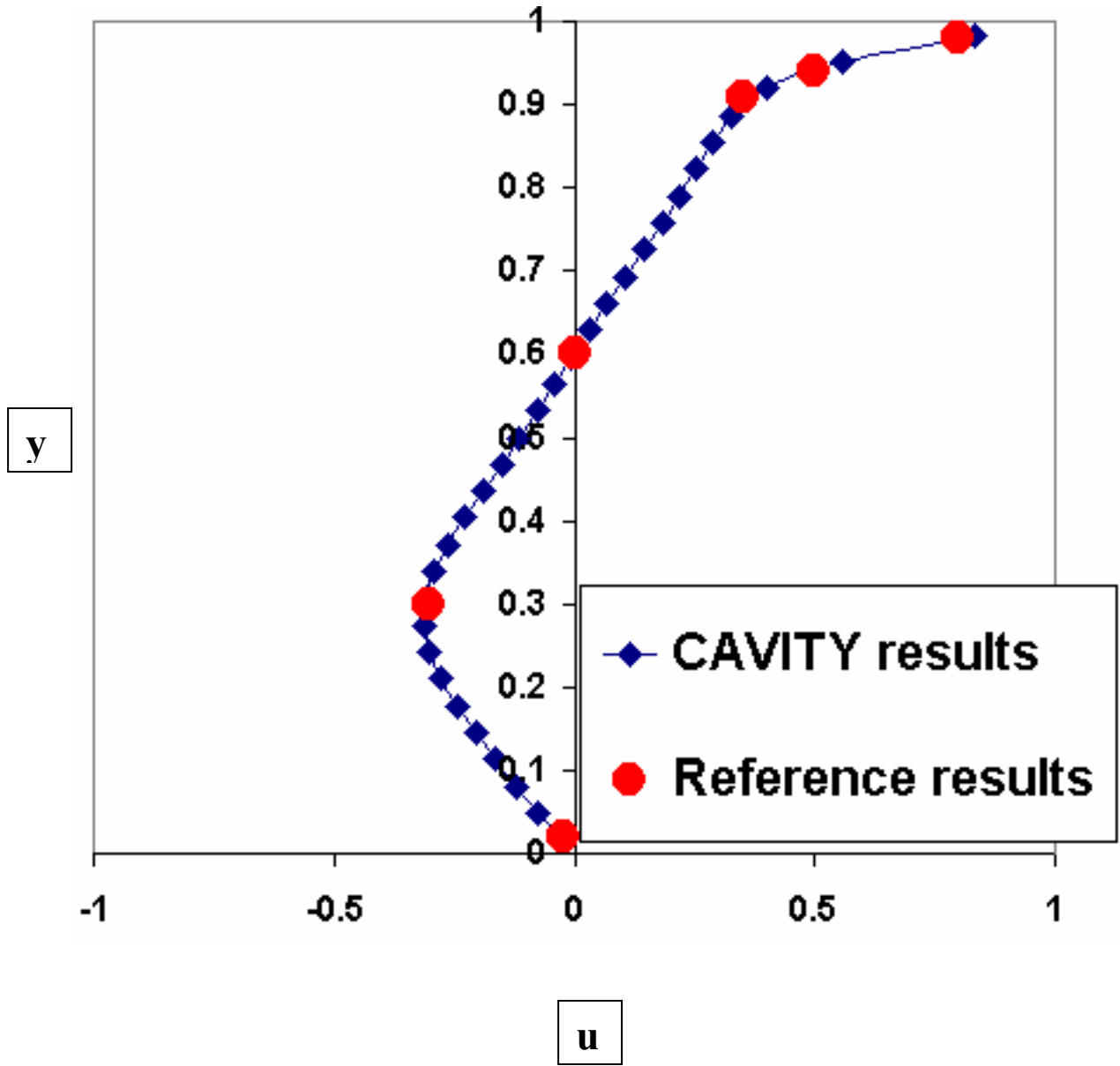


**Re = 400, mid-plane velocity at x = 0.5**

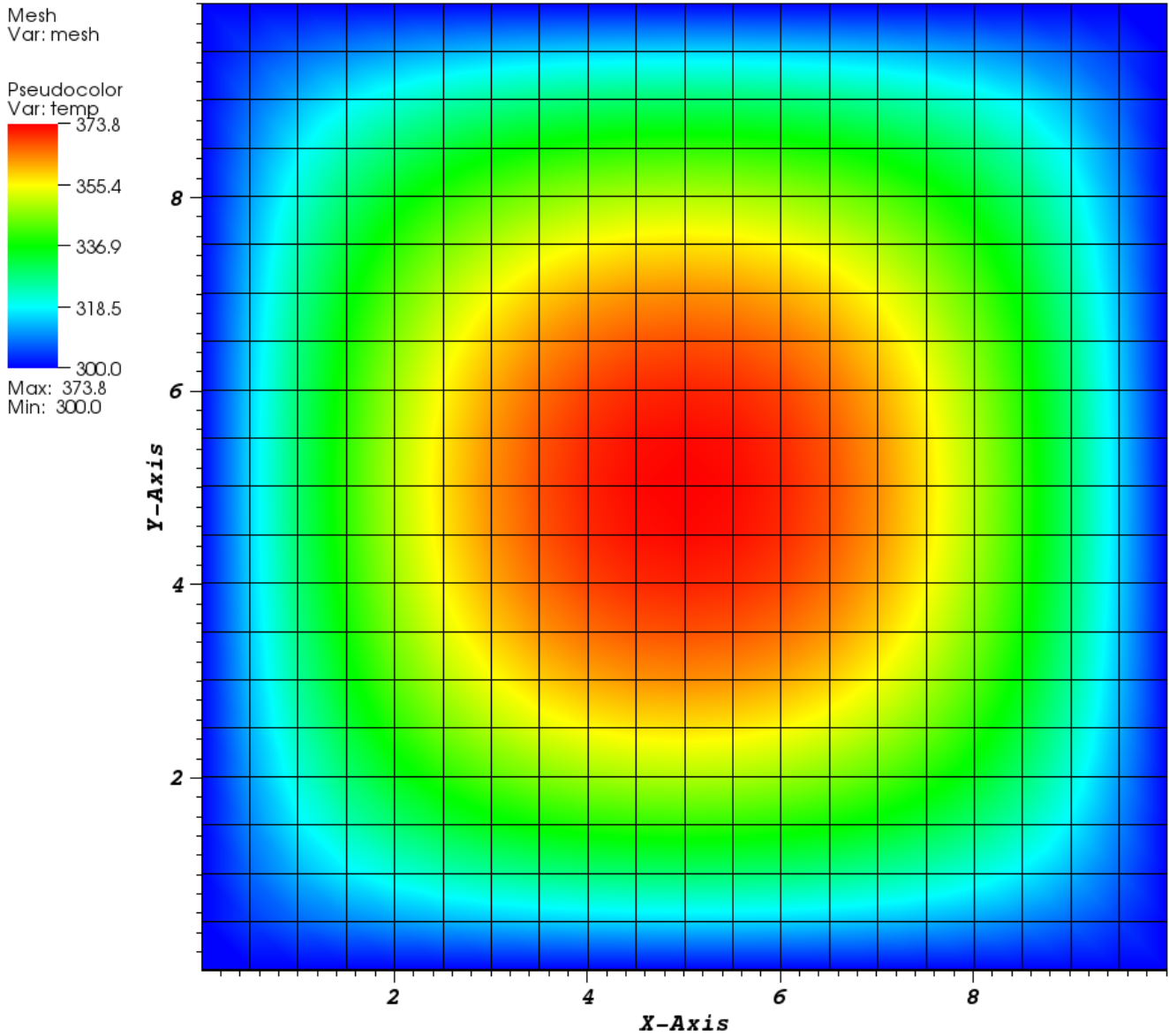


**Poisson eq.  $\nabla^2 T = -g$  with  $g=10^4$  and  $T=300$  on all boundaries**

NODE	TEMP	NODE	TEMP	NODE	TEMP	NODE	TEMP
1	300.000	2	300.000	3	300.000	4	300.000
5	300.000	6	300.000	7	300.000	8	300.000
9	300.000	10	300.000	11	300.000	12	300.000
13	300.000	14	300.000	15	300.000	16	300.000
17	300.000	18	300.000	19	300.000	20	300.000
21	300.000	22	300.000	23	304.452	24	307.484
25	309.767	26	311.533	27	312.906	28	313.959
29	314.739	30	315.276	31	315.591	32	315.695
33	315.591	34	315.276	35	314.739	36	313.959
37	312.906	38	311.533	39	309.767	40	307.484
41	304.452	42	300.000	43	300.000	44	307.484
45	313.148	46	317.522	47	320.947	48	323.625
49	325.686	50	327.216	51	328.272	52	328.891
53	329.095	54	328.891	55	328.272	56	327.216
57	325.686	58	323.625	59	320.947	60	317.522
61	313.148	62	307.484	63	300.000	64	300.000
65	309.767	66	317.522	67	323.687	68	328.586
69	332.448	70	335.436	71	337.660	72	339.198
73	340.102	74	340.400	75	340.102	76	339.198
77	337.660	78	335.436	79	332.448	80	328.586
81	323.687	82	317.522	83	309.767	84	300.000
85	300.000	86	311.533	87	320.947	88	328.586
89	334.739	90	339.632	91	343.438	92	346.281
93	348.252	94	349.412	95	349.795	96	349.412
97	348.252	98	346.281	99	343.438	100	339.632
101	334.739	102	328.586	103	320.947	104	311.533
105	300.000	106	300.000	107	312.906	108	323.625
109	332.448	110	339.632	111	345.389	112	349.890
113	353.265	114	355.610	115	356.992	116	357.448
117	356.992	118	355.610	119	353.265	120	349.890
121	345.389	122	339.632	123	332.448	124	323.625
125	312.906	126	300.000	127	300.000	128	313.959
129	325.686	130	335.436	131	343.438	132	349.890
133	354.957	134	358.768	135	361.422	136	362.988
137	363.505	138	362.988	139	361.422	140	358.768
141	354.957	142	349.890	143	343.438	144	335.436
145	325.686	146	313.959	147	300.000	148	300.000
149	314.739	150	327.216	151	337.660	152	346.281
153	353.265	154	358.768	155	362.918	156	365.814
157	367.523	158	368.089	159	367.523	160	365.814
161	362.918	162	358.768	163	353.265	164	346.281
165	337.660	166	327.216	167	314.739	168	300.000
169	300.000	170	315.276	171	328.272	172	339.198
173	348.252	174	355.610	175	361.422	176	365.814
177	368.881	178	370.694	179	371.294	180	370.694
181	368.881	182	365.814	183	361.422	184	355.610
185	348.252	186	339.198	187	328.272	188	315.276
189	300.000	190	300.000	191	315.591	192	328.891
193	340.102	194	349.412	195	356.992	196	362.988
197	367.523	198	370.694	199	372.569	200	373.190
201	372.569	202	370.694	203	367.523	204	362.988
205	356.992	206	349.412	207	340.102	208	328.891
209	315.591	210	300.000	211	300.000	212	315.695
213	329.095	214	340.400	215	349.795	216	357.448
217	363.505	218	368.089	219	371.294	220	373.190

221 373.817 222 373.190 223 371.294 224 368.089  
225 363.505 226 357.448 227 349.795 228 340.400  
229 329.096 230 315.695 231 300.000 232 300.000  
233 315.591 234 328.891 235 340.102 236 349.412  
237 356.992 238 362.988 239 367.523 240 370.694  
241 372.569 242 373.190 243 372.569 244 370.694  
245 367.523 246 362.988 247 356.992 248 349.412  
249 340.102 250 328.891 251 315.591 252 300.000  
253 300.000 254 315.276 255 328.272 256 339.198  
257 348.252 258 355.610 259 361.422 260 365.814  
261 368.881 262 370.694 263 371.294 264 370.694  
265 368.881 266 365.814 267 361.422 268 355.610  
269 348.252 270 339.198 271 328.272 272 315.276  
273 300.000 274 300.000 275 314.739 276 327.216  
277 337.660 278 346.281 279 353.265 280 358.768  
281 362.918 282 365.814 283 367.523 284 368.089  
285 367.523 286 365.814 287 362.918 288 358.768  
289 353.265 290 346.281 291 337.660 292 327.216  
293 314.739 294 300.000 295 300.000 296 313.959  
297 325.686 298 335.436 299 343.438 300 349.890  
301 354.957 302 358.768 303 361.422 304 362.988  
305 363.505 306 362.988 307 361.422 308 358.768  
309 354.957 310 349.890 311 343.438 312 335.436  
313 325.686 314 313.959 315 300.000 316 300.000  
317 312.906 318 323.625 319 332.448 320 339.632  
321 345.389 322 349.890 323 353.265 324 355.610  
325 356.992 326 357.448 327 356.992 328 355.610  
329 353.265 330 349.890 331 345.389 332 339.632  
333 332.448 334 323.625 335 312.906 336 300.000  
337 300.000 338 311.533 339 320.947 340 328.586  
341 334.739 342 339.632 343 343.438 344 346.281  
345 348.252 346 349.412 347 349.795 348 349.412  
349 348.252 350 346.281 351 343.438 352 339.632  
353 334.739 354 328.586 355 320.947 356 311.533  
357 300.000 358 300.000 359 309.767 360 317.522  
361 323.687 362 328.586 363 332.448 364 335.436  
365 337.660 366 339.198 367 340.102 368 340.400  
369 340.102 370 339.198 371 337.660 372 335.436  
373 332.448 374 328.586 375 323.687 376 317.522  
377 309.767 378 300.000 379 300.000 380 307.484  
381 313.148 382 317.522 383 320.947 384 323.625  
385 325.686 386 327.216 387 328.272 388 328.891  
389 329.096 390 328.891 391 328.272 392 327.216  
393 325.686 394 323.625 395 320.947 396 317.522  
397 313.148 398 307.484 399 300.000 400 300.000  
401 304.452 402 307.484 403 309.767 404 311.533  
405 312.906 406 313.959 407 314.739 408 315.276  
409 315.591 410 315.695 411 315.591 412 315.276  
413 314.739 414 313.959 415 312.906 416 311.533  
417 309.767 418 307.484 419 304.452 420 300.000  
421 300.000 422 300.000 423 300.000 424 300.000  
425 300.000 426 300.000 427 300.000 428 300.000  
429 300.000 430 300.000 431 300.000 432 300.000  
433 300.000 434 300.000 435 300.000 436 300.000  
437 300.000 438 300.000 439 300.000 440 300.000  
441 300.0

DB: data0000400.vtk  
Cycle: 400



user: mashayek  
Mon Nov 26 15:40:35 2012